



Overview of Washington Agriculture

North American Alfalfa Improvement Conference

Presented By: Greg Haubrich, Assistant Director, Plant Protection Division



Washington
State Department of
Agriculture

Who is WSDA

- Executive Cabinet Agency
- 747 full-time employees
- Staff includes veterinarians, entomologists, chemists, toxicologists, inspectors, investigators, policy and marketing analysts, customer service specialists, and managers.
- About 300 seasonal employees, primarily inspectors of fruits & vegetables, grain, hops and invasive species surveyors and trappers.

Agency Divisions

Director's
Office

Animal
Services

Agricultural
Environmental
Services

Commodity
Inspection

**Plant
Protection**

Food Safety &
Consumer
Services

Pesticide
Management

Plant Protection Division



Division Programs

Agricultural
Investigations

Chemical and
Hop Lab

Pest
Program

Plant
Services

Pollinator
Health

Weights and
Measures

About Washington Farms

32,076

Total number of farms. (2022)
About 95% family owned.



300+

Number of crops grown in Washington



\$12.8 billion

Market value of crops and livestock (2022)



\$2.068 billion

Dollar value of apples – state's top crop (2022)



89%

of Washington farms are small farms

82% - less than 180 acres
67% - less than 50 acres



164,000

People employed in ag and food industry

**Credit USDA NASS 2017 Census of Agriculture unless specified.*

Washington's Top 10 (2022)



1

APPLES

\$2.068 billion



2

MILK

\$1.678 billion



3

WHEAT

\$1.71 billion



4

CATTLE

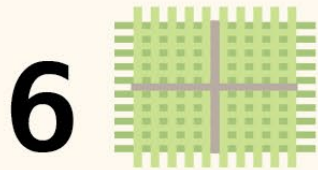
\$1.019 billion



5

POTATOES

\$942.7 million



6

HAY

\$882.6 million



7

EGGS

\$459.9 million



8

HOPS

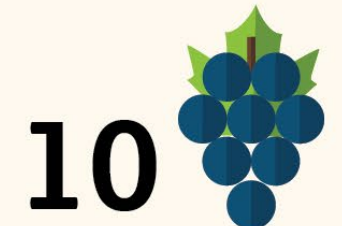
\$434.5 million



9

CHERRIES

\$407.7 million



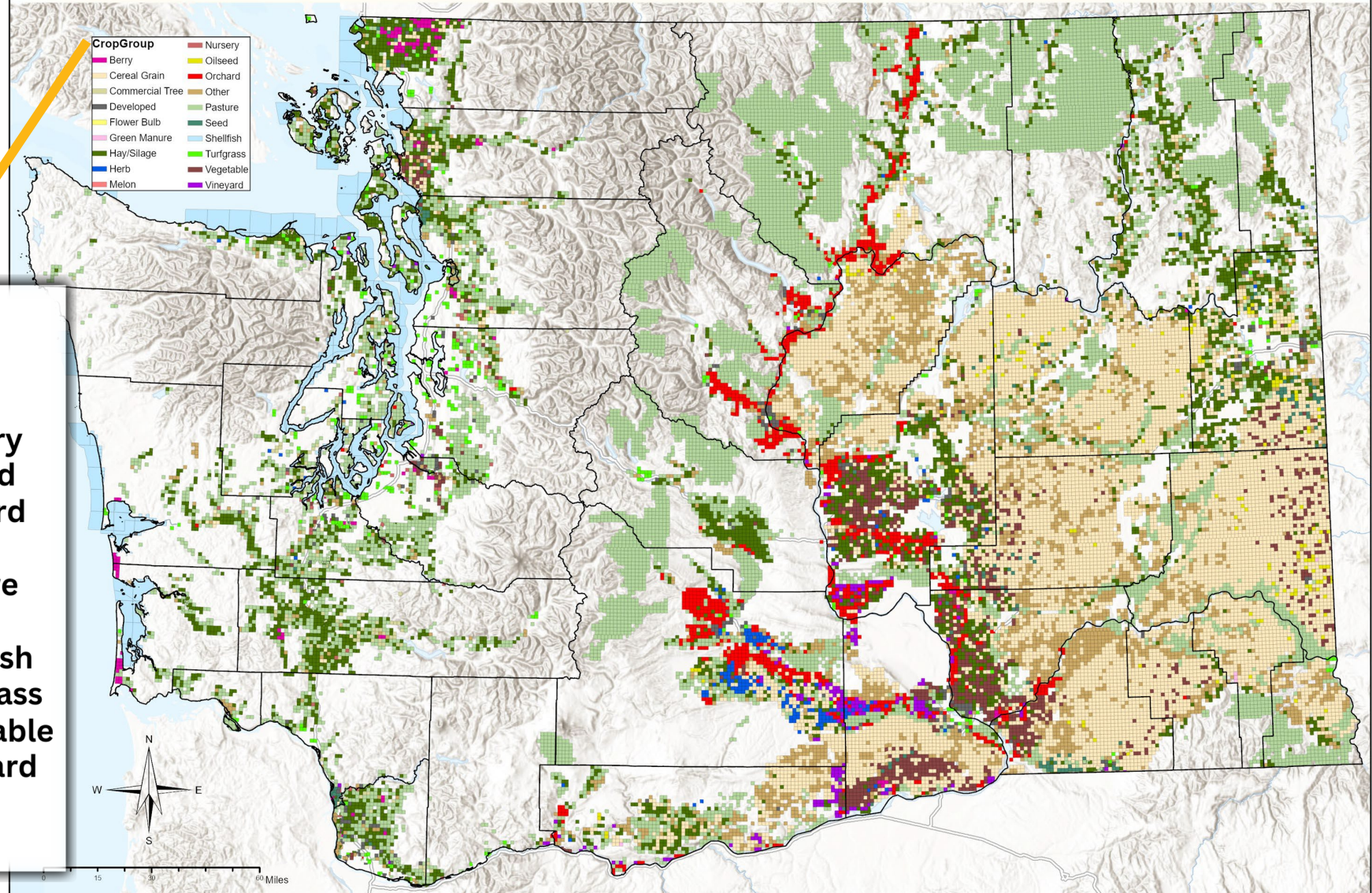
10

GRAPES

\$394.9 million

Source: USDA National Agricultural Statistics Service, unless otherwise noted. *USDA statistics exclude cannabis.

2022 Washington State Agricultural Land Use



Crop Group

- | | |
|---|---|
|  Berry |  Nursery |
|  Cereal Grain |  Oilseed |
|  Commercial Tree |  Orchard |
|  Developed |  Other |
|  Flower Bulb |  Pasture |
|  Green Manure |  Seed |
|  Hay/Silage |  Shellfish |
|  Herb |  Turfgrass |
|  Melon |  Vegetable |
| |  Vineyard |

References for outside crop data sources:
 Bureau of Land Management (BLM)
 Conservation Districts
 National Agricultural Statistics Service (NASS) CDL
 Washington State Department of Health (DOH)
 United States Department of Agriculture (USDA)

This map represents data collected and generated between 2002 and 2022. The dominant crop (by acres) in each section of land is shown. This product is provided 'as is' without warranty of any kind, either expressed or implied, including, but not limited to, the implied warranties of merchantability and fitness for a particular use. For more information go: <https://agr.wa.gov/departments/land-and-water/natural-resources/agricultural-land-use>

Scale: 1:2,250,000
 Natural Resources Assessment Section,
 WSDA
 Joel Demory March, 2023

Washington's Top Export Destinations & Export Products (2023)



Top Export Destinations

Canada	\$1.3 billion
Japan	\$1.2 billion
China	\$857 million
Mexico	\$687 million
South Korea	\$497 million

Top Export Products

Frozen French Fries	\$1.1 billion
Fish and Seafood	\$1.1 billion
Wheat	\$684 million
Apples	\$683 million
Dairy	\$563 million



Questions

Contact Us



Ghaubrich@agr.wa.gov



360-902-1976



agr.wa.gov

